

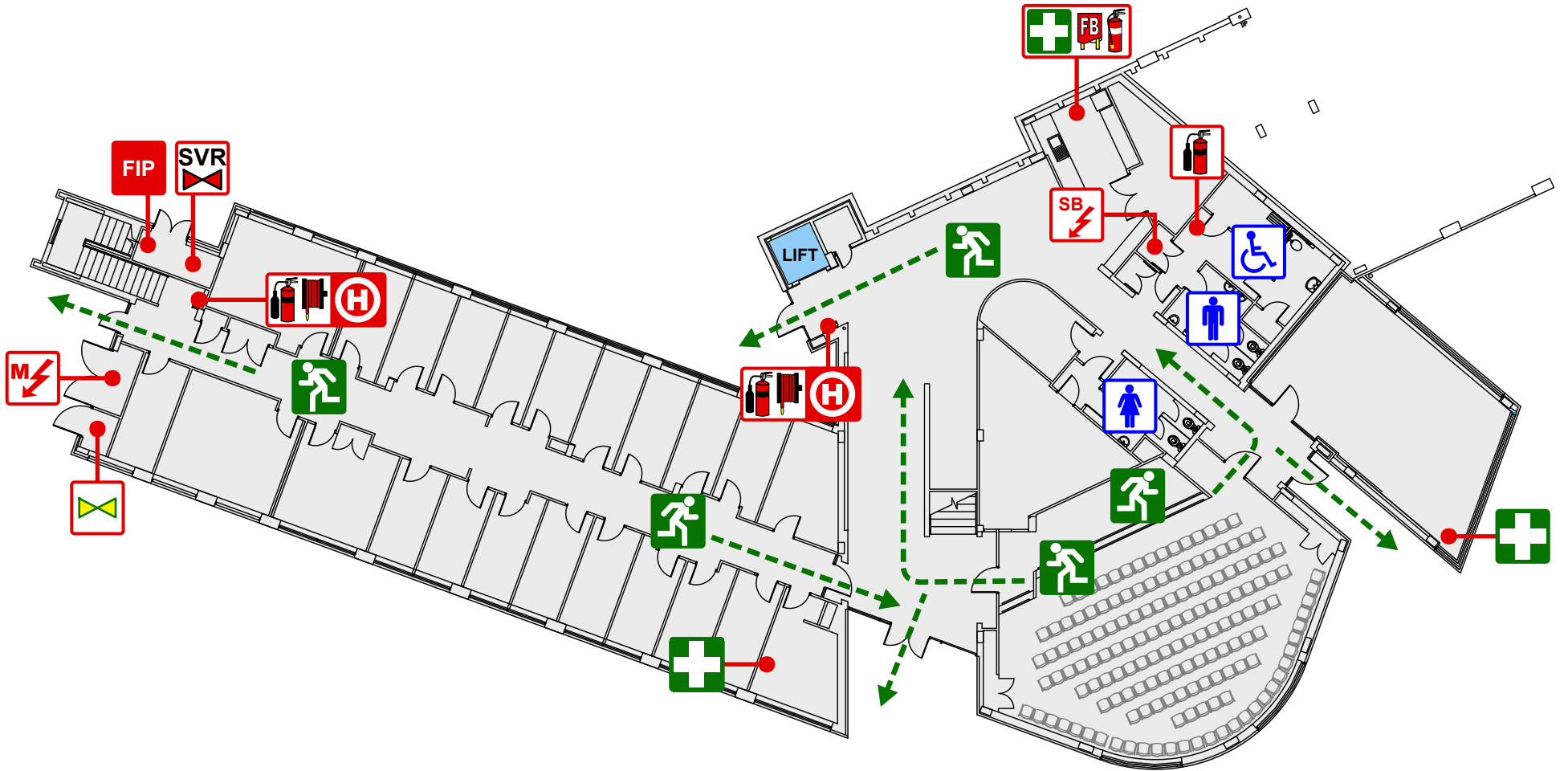


Australian
National
University

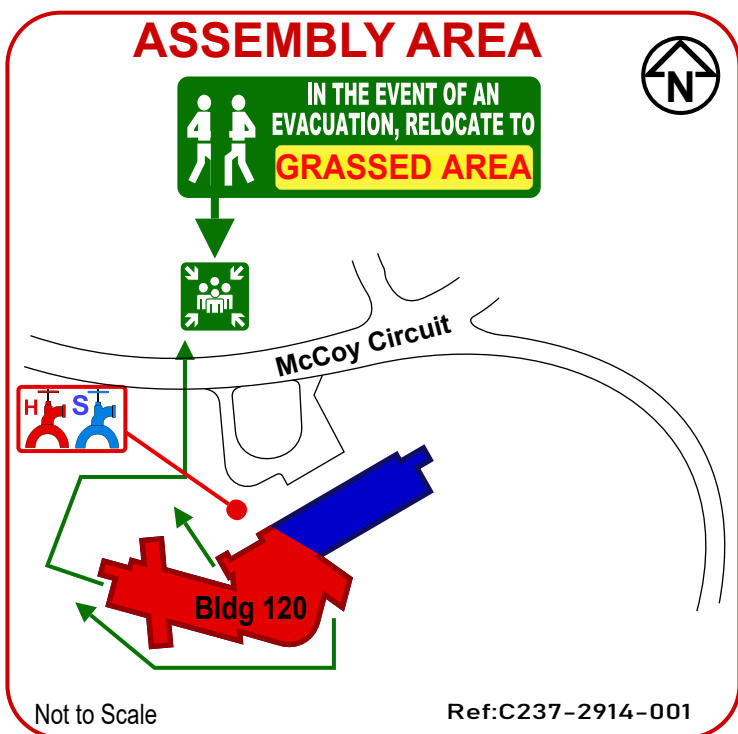
EVACUATION DIAGRAM

BUILDING 120 - McCOY CIRCUIT, ACTON, ACT 2601

LEVEL 1



V1.0 PUBLISHED: 22ND NOVEMBER 2019 REVIEW: NOVEMBER 2024



EMERGENCY PROCEDURES

- R** REMOVE people from the immediate danger.
- A** ALERT all people nearby.
RAISE AN ALARM - DIAL 000
CONFINE the Smoke and Fire, attempt to EXTINGUISH the fire if safe and trained to do so.
- C** CONFINE the Smoke and Fire, attempt to EXTINGUISH the fire if safe and trained to do so.
- E** EVACUATE the building and proceed to the Assembly Area
ANU Security 6125 2249 (X52249)
Then press 1 for emergency priority

LEGEND

MAIN ELECTRICAL SWITCHBOARD	ELECTRICAL SUB-BOARD	FIRE HYDRANT
CO2 FIRE EXTINGUISHER	HYDRANT BOOSTER	GAS SHUT-OFF
DCP FIRE EXTINGUISHER	SPRINKLER BOOSTER	FIRST AID KIT
FIRE INDICATOR PANEL	FIRE HOSE REEL	EGRESS ROUTE
SPRINKLER VALVE ROOM	FIRE BLANKET	ASSEMBLY AREA

FOR ALL EMERGENCY SERVICES
Dial 000

FOR ALL EMERGENCIES CONTACT SECURITY
Dial 52249

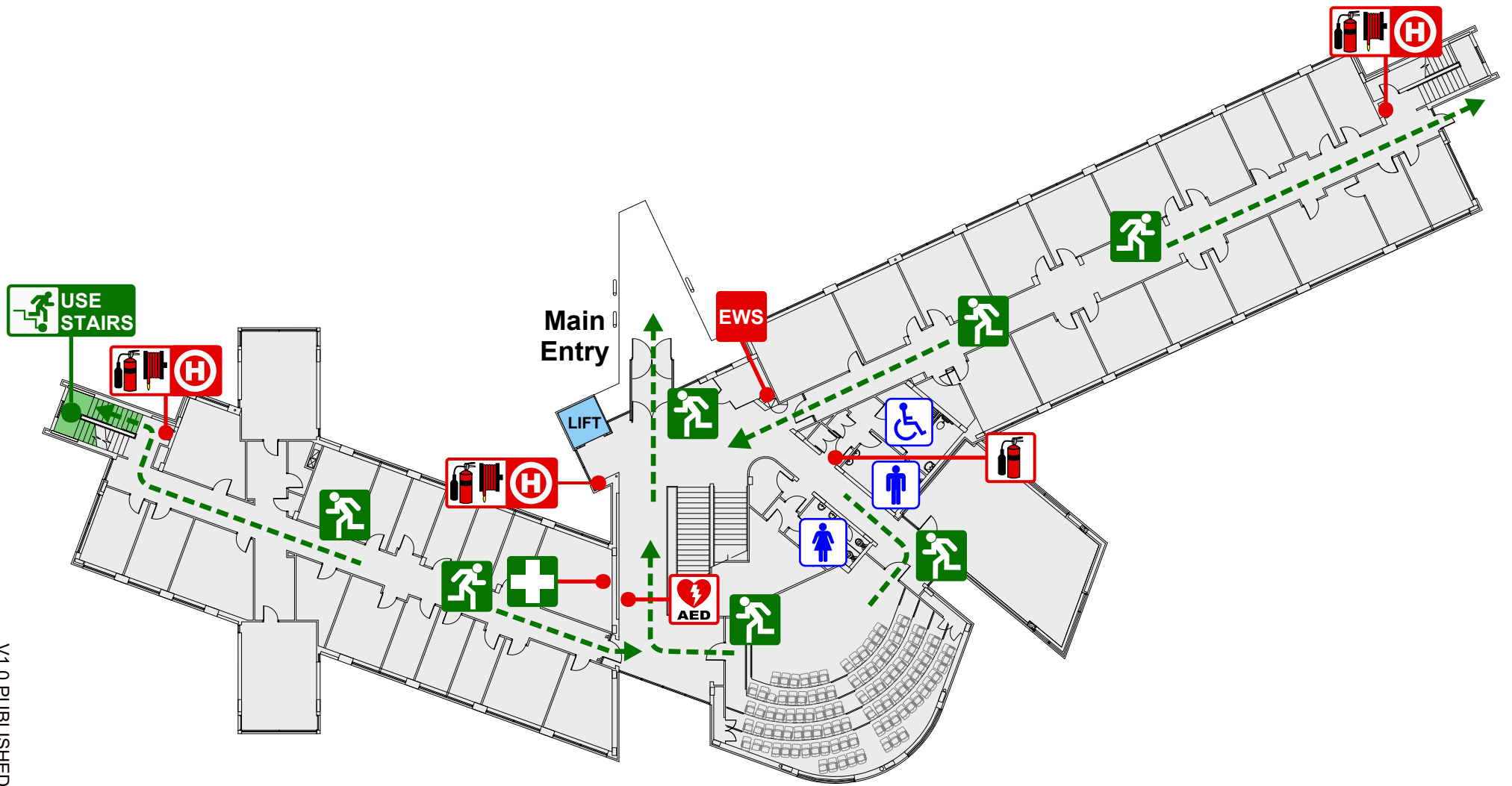


Australian
National
University

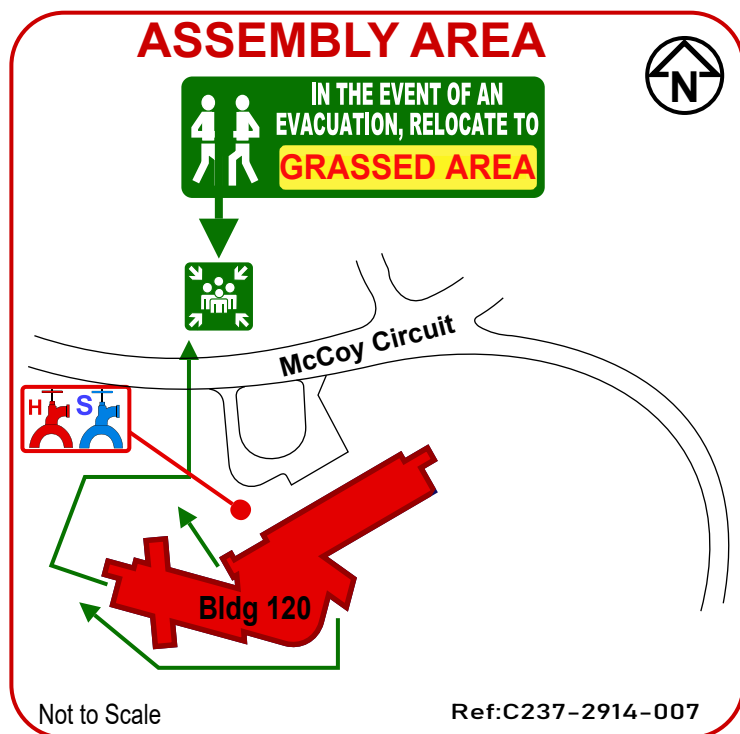
EVACUATION DIAGRAM

BUILDING 120 - McCOY CIRCUIT, ACTON, ACT 2601

LEVEL 2



V1.0 PUBLISHED: 22ND NOVEMBER 2019 REVIEW: NOVEMBER 2024



EMERGENCY PROCEDURES

- R** **REMOVE** people from the immediate danger.
- A** **ALERT** all people nearby.
RAISE AN ALARM - DIAL 000
CONFINE the Smoke and Fire, attempt to **EXTINGUISH** the fire if safe and trained to do so.
- C** **CONFINE** the Smoke and Fire, attempt to **EXTINGUISH** the fire if safe and trained to do so.
- E** **EVACUATE** the building and proceed to the Assembly Area
ANU Security 6125 2249 (X52249)
Then press 1 for emergency priority

LEGEND

	CO2 FIRE EXTINGUISHER		SVR SPRINKLER VALVE ROOM		FIRE HYDRANT
	DCP FIRE EXTINGUISHER		HYDRANT BOOSTER		GAS SHUT-OFF
	EMERGENCY WARNING SYSTEM		SPRINKLER BOOSTER		FIRST AID KIT
	FIRE INDICATOR PANEL		FIRE HOSE REEL		EGRESS ROUTE
	DEFIBRILLATOR		FIRE BLANKET		ASSEMBLY AREA

FOR ALL EMERGENCY SERVICES
Dial 000

FOR ALL EMERGENCIES CONTACT SECURITY
Dial 52249

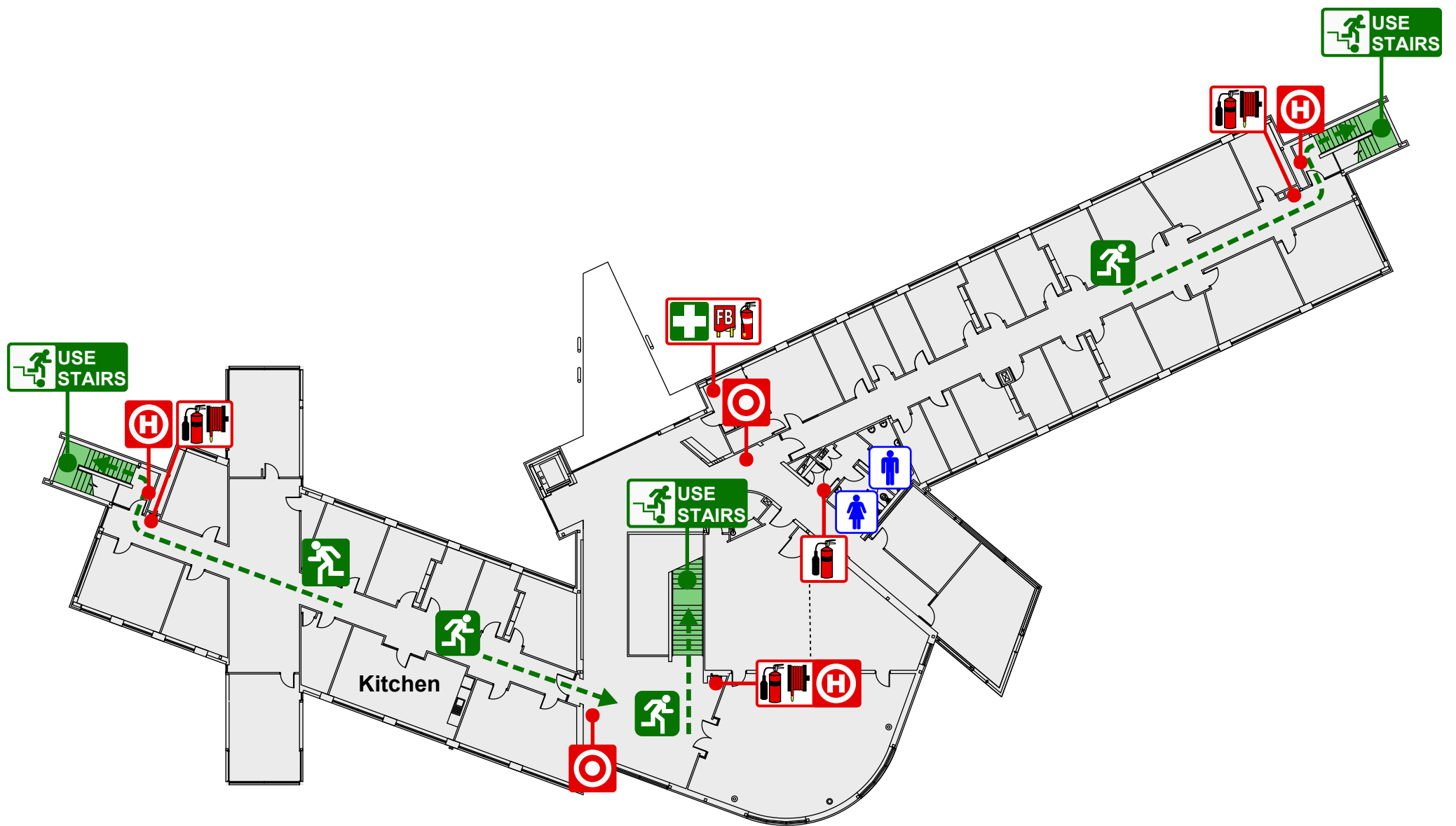


Australian
National
University

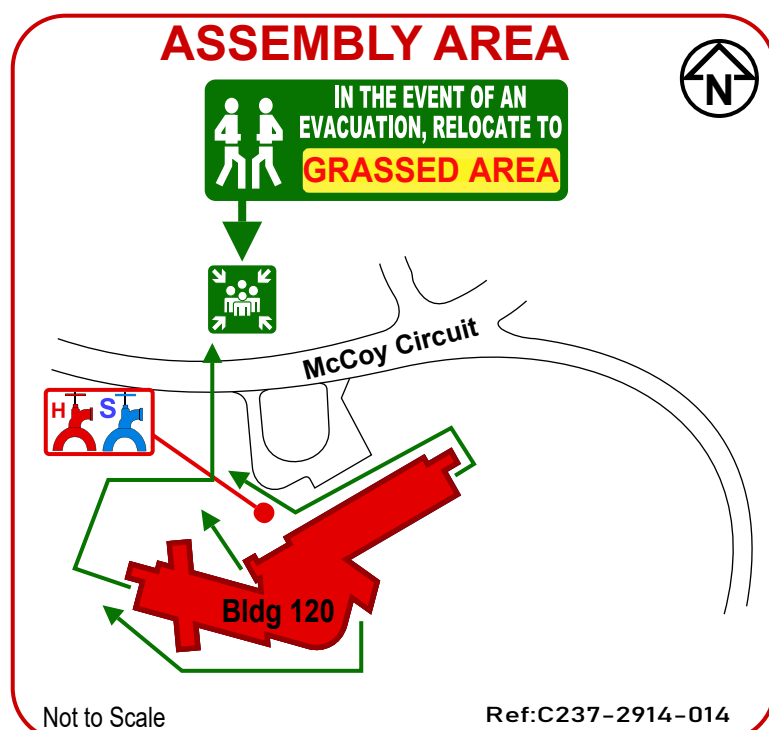
EVACUATION DIAGRAM

BUILDING 120 - McCOY CIRCUIT, ACTON, ACT 2601

LEVEL 3



V1.0 PUBLISHED: 22ND NOVEMBER 2019 REVIEW: NOVEMBER 2024



EMERGENCY PROCEDURES

- R** **REMOVE** people from the immediate danger.
- A** **ALERT** all people nearby.
RAISE AN ALARM - DIAL 000
CONFINE the Smoke and Fire, attempt to **EXTINGUISH** the fire if safe and trained to do so.
- C** **CONFINE** the Smoke and Fire, attempt to **EXTINGUISH** the fire if safe and trained to do so.
- E** **EVACUATE** the building and proceed to the Assembly Area
ANU Security 6125 2249 (X52249)
Then press 1 for emergency priority

LEGEND

	DCP FIRE EXTINGUISHER		FIRE HYDRANT		FIRST AID KIT
	CO2 FIRE EXTINGUISHER		FIRE HOSE REEL		EGRESS ROUTE
	HYDRANT BOOSTER		FIRE BLANKET		ASSEMBLY AREA
	SPRINKLER BOOSTER		MANUAL CALL POINT		RED BREAK GLASS

FOR ALL EMERGENCY SERVICES
Dial 000

FOR ALL EMERGENCIES CONTACT SECURITY
Dial 52249